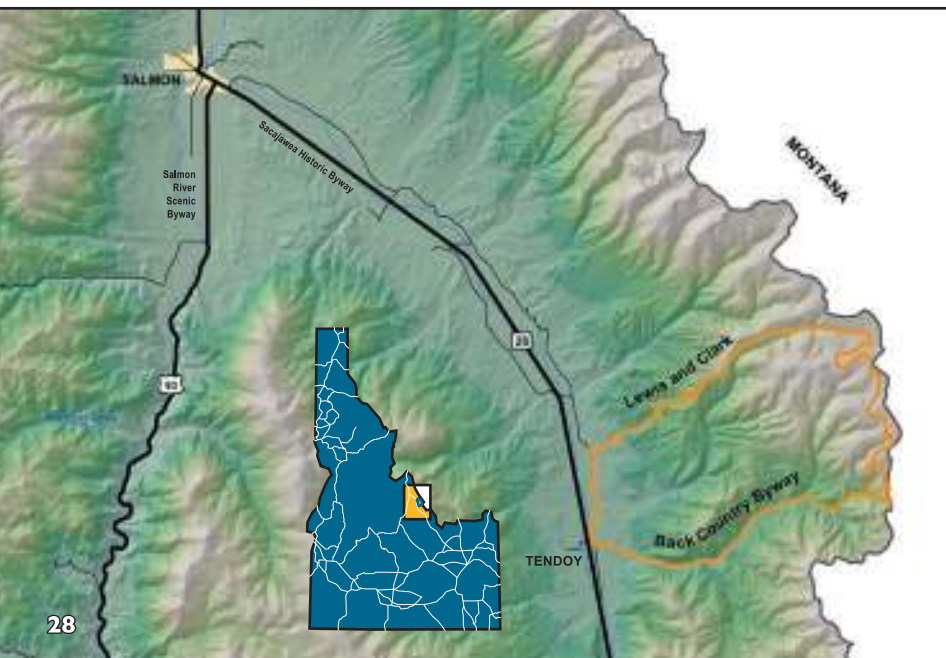


Lewis and Clark Back Country Byway

About two hundred years ago, Meriwether Lewis and William Clark stood high on a ridge-line that divides continental waters, and began the discovery of the Pacific Northwest. Stands of fir and pine trees, high-mountain meadows and rolling, jade-colored hills look much the same today as when the famous explorers journeyed to the crest of Lemhi Pass in 1805.

As you travel the Lewis and Clark Back Country Byway, you'll see where the expedition unfurled the flag of the United States for the first time west of the Rocky Mountains, as well as spectacular vistas of the Lemhi Pass, Salmon River, Rocky and Lost River mountain ranges, rolling sagebrush and alpine meadows, wildlife, and carpets of wildflowers.



Location - The byway is located 20 miles southeast of Salmon off of Idaho 28. Turn east from Idaho 28 at the Tendoy store.

Length - 39 miles. Allow 3 hours.

Roadway - Roads are mostly single lane with gravel surface and occasional turnouts.

When to see it - Snow usually closes the roads from November until June. Summer and early fall are the best times of the year to make the journey. Beware of muddy roads in late spring and early summer. The route is groomed in the winter months and is popular with snowmobilers.

Special attractions - Back Country Interpretive Kiosk; Sharkey Hot Springs; Lemhi Pass where the Lewis and Clark expedition first crossed the Continental Divide going west; 1st Flag Unfurling Site; Continental Divide National Scenic Trail.

Camping - BLM Agency Creek recreation site at Milepost 33: Tent and trailer campsites, toilets, no potable water available.

Services - Full services in Salmon; partial services in Tendoy, Lemhi and Leadore. To the south, the nearest full-service community is Idaho Falls, 140 miles away.

Contacts - The Bureau of Land Management's Salmon Field Office: 208-756-5400; Salmon-Challis National Forest: 208-756-5100; Salmon Valley Chamber of Commerce: 208-756-2100.